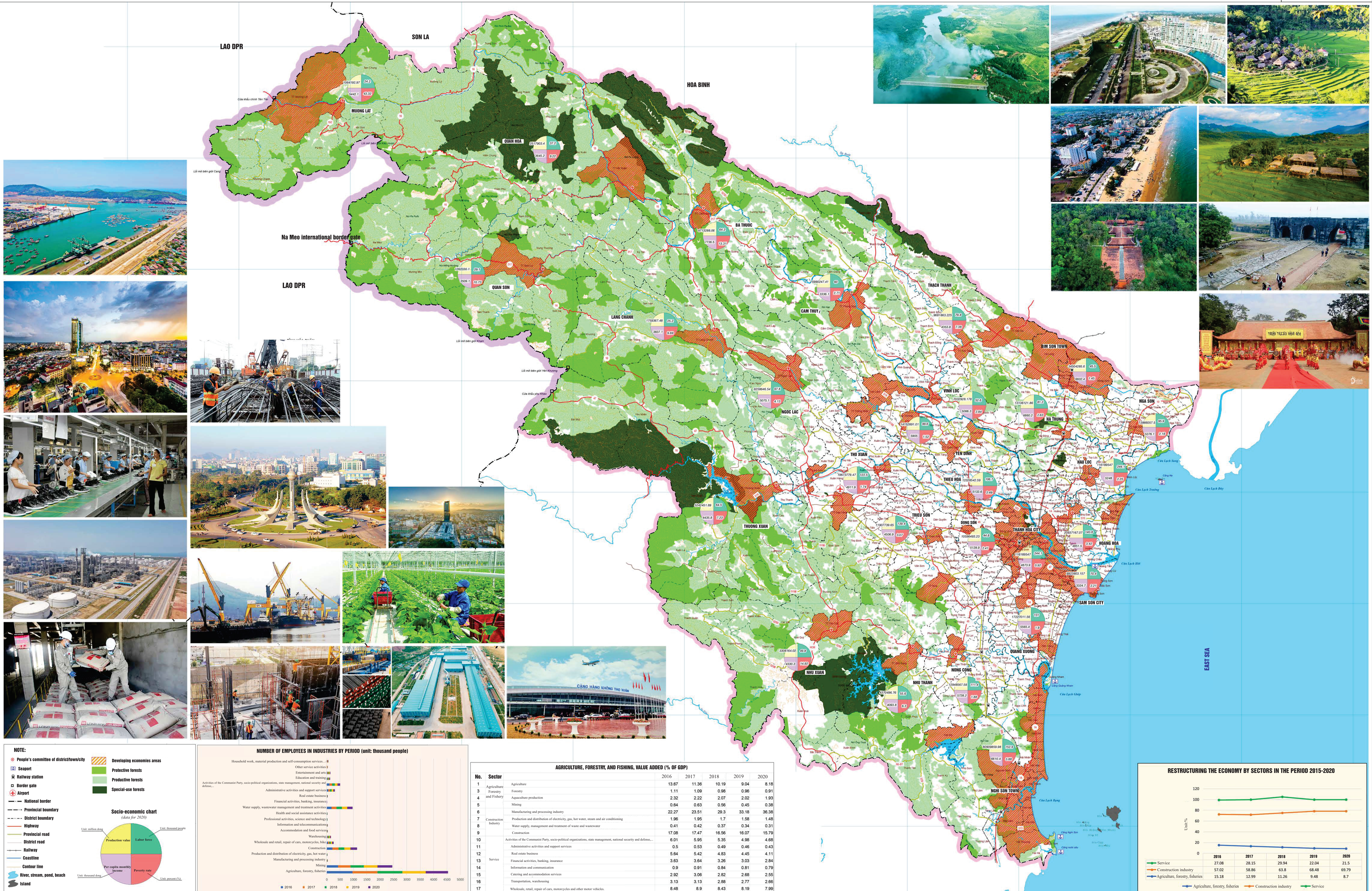
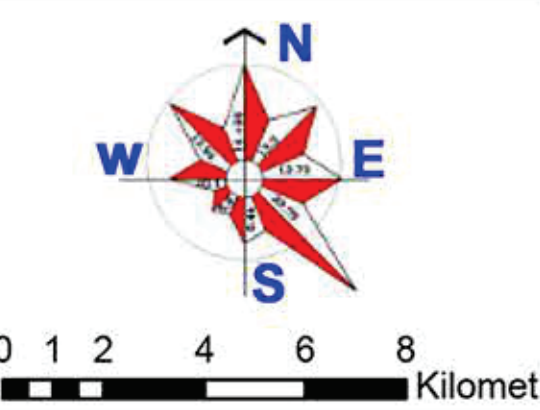


PLANNING OF THANH HOA PROVINCE IN THE PERIOD OF 2021 - 2030, VISION TO 2045

CURRENT MAP OF SOCIO-ECONOMIC DEVELOPMENT



NOTE:

- People's committee of district/town/city
- Seaport
- Railway station
- Border gate
- Airport
- National border
- Provincial boundary
- District boundary
- Highway
- Provincial road
- District road
- Railway
- Coastline
- Contour line
- River, stream, pond, beach
- Island

Socio-economic chart (data for 2020)

Unit: million people

Production value

Labor force

Per capita monthly income

Poverty rate

Unit: thousand people

Unit: thousand dong

Unit: percent (%)

NUMBER OF EMPLOYEES IN INDUSTRIES BY PERIOD (unit: thousand people)

Industry	2016	2017	2018	2019	2020
Household work, material production and self-employment services	1.11	1.09	0.98	0.96	0.91
Other service activities	2.32	2.22	2.07	2.02	1.93
Education and training	0.64	0.63	0.56	0.45	0.38
Health and social assistance activities	22.27	23.51	29.3	33.18	36.38
Administrative activities and support services	1.96	1.95	1.7	1.58	1.48
Real estate business	0.41	0.42	0.37	0.34	0.31
Financial activities, banking, insurance	17.08	17.47	16.56	16.07	15.79
Water supply, wastewater management and treatment activities	0.01	0.01	0.01	0.01	0.01
Information and communication	0.5	0.53	0.49	0.46	0.43
Professional activities, science and technology	5.64	5.42	4.83	4.45	4.11
Accommodation and food services	3.63	3.64	3.26	3.03	2.84
Wholesale and retail, repair of cars, motorcycles, bikes	0.9	0.91	0.84	0.81	0.79
Construction	2.92	3.06	2.82	2.68	2.55
Production and distribution of electricity, gas, hot water, steam and air conditioning	3.13	3.13	2.88	2.77	2.66
Manufacturing and processing industry	8.48	8.9	8.43	8.19	7.99

AGRICULTURE, FORESTRY, AND FISHING, VALUE ADDED (% OF GDP)

No.	Sector	2016	2017	2018	2019	2020
1	Agriculture	13.87	11.36	10.19	9.04	8.19
2	Forestry	1.11	1.09	0.98	0.96	0.91
3	Fishing	2.32	2.22	2.07	2.02	1.93
4	Aquaculture production	0.64	0.63	0.56	0.45	0.38
5	Mining	22.27	23.51	29.3	33.18	36.38
6	Manufacturing and processing industry	1.96	1.95	1.7	1.58	1.48
7	Production and distribution of electricity, gas, hot water, steam and air conditioning	0.41	0.42	0.37	0.34	0.31
8	Water supply, management and treatment of waste and wastewater	17.08	17.47	16.56	16.07	15.79
9	Construction	0.01	0.01	0.01	0.01	0.01
10	Activities of the Communist Party, socio-political organizations, state management, national security and defense...	0.5	0.53	0.49	0.46	0.43
11	Administrative activities and support services	5.64	5.42	4.83	4.45	4.11
12	Real estate business	3.63	3.64	3.26	3.03	2.84
13	Financial activities, banking, insurance	0.9	0.91	0.84	0.81	0.79
14	Information and communication	2.92	3.06	2.82	2.68	2.55
15	Catering and accommodation services	3.13	3.13	2.88	2.77	2.66
16	Transportation, warehousing	8.48	8.9	8.43	8.19	7.99
17	Wholesale, retail, repair of cars, motorcycles and other motor vehicles					

