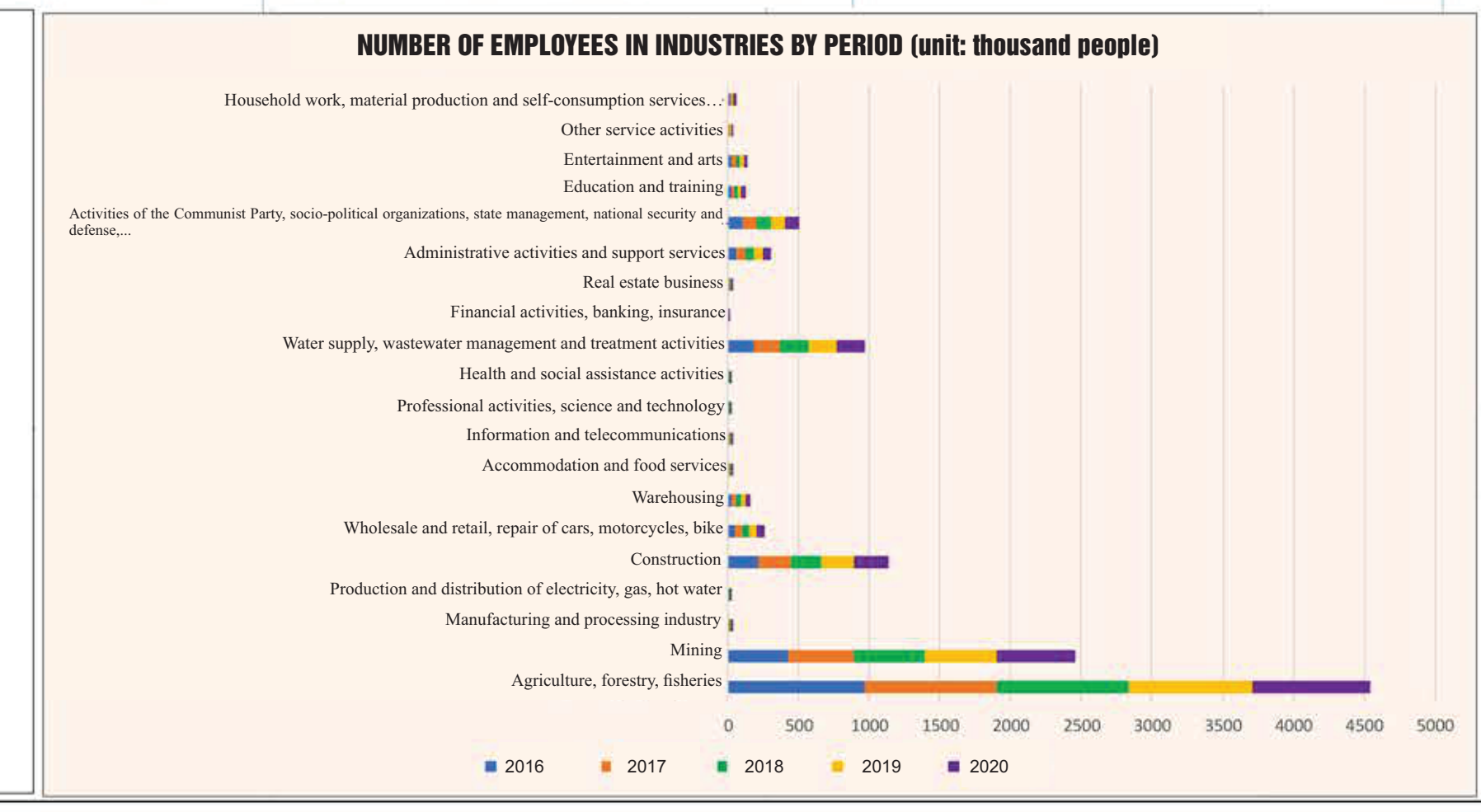
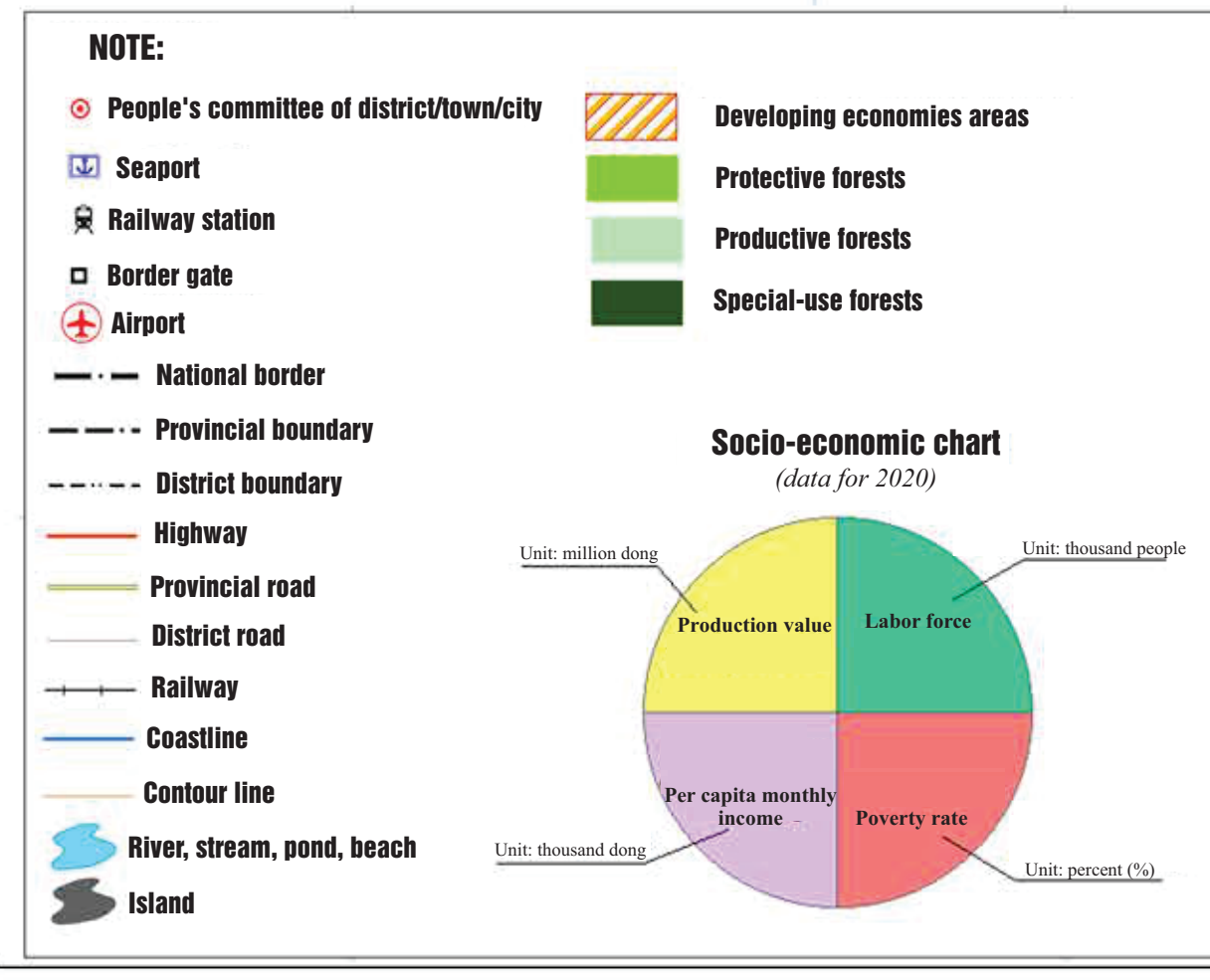
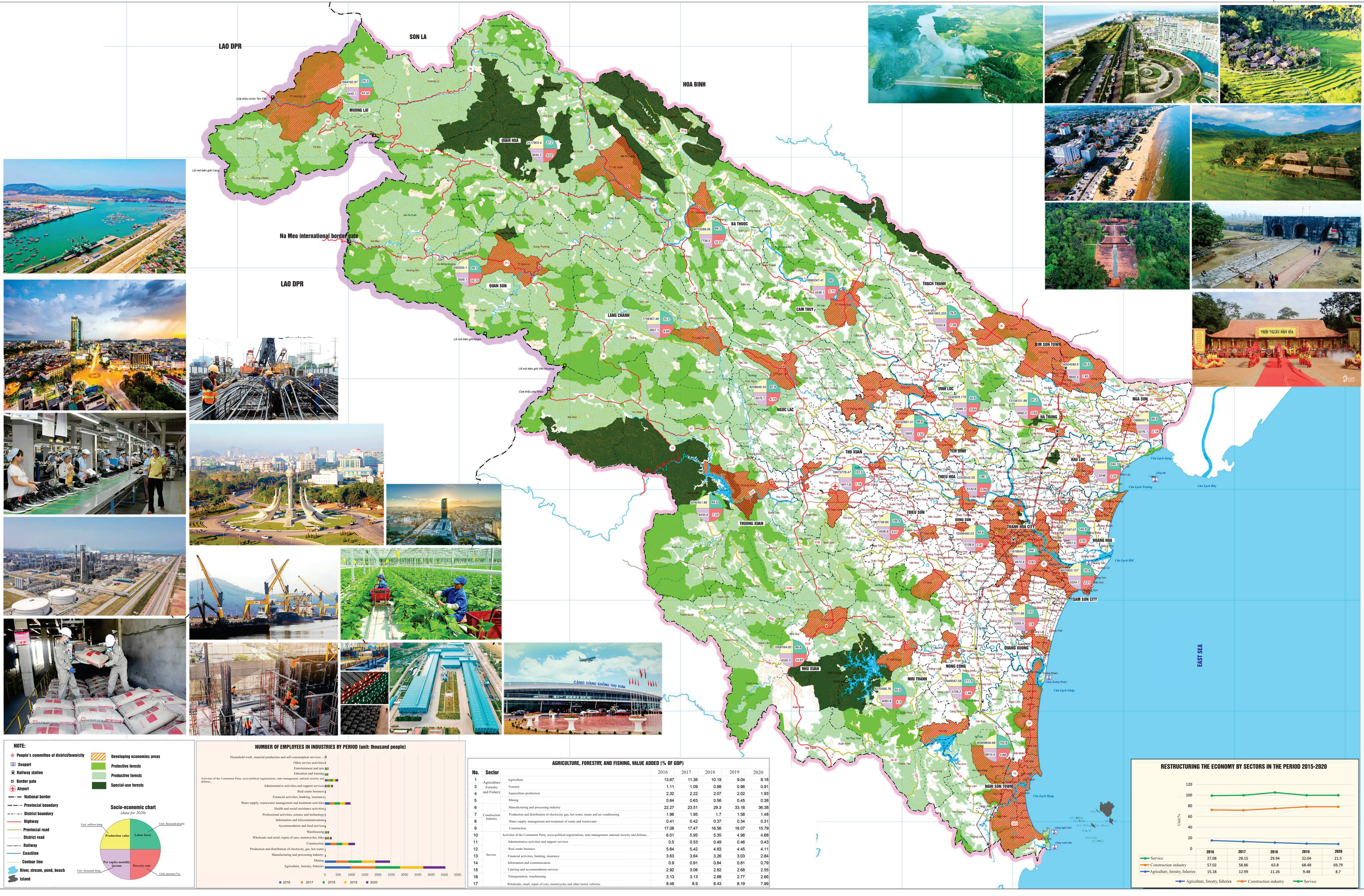
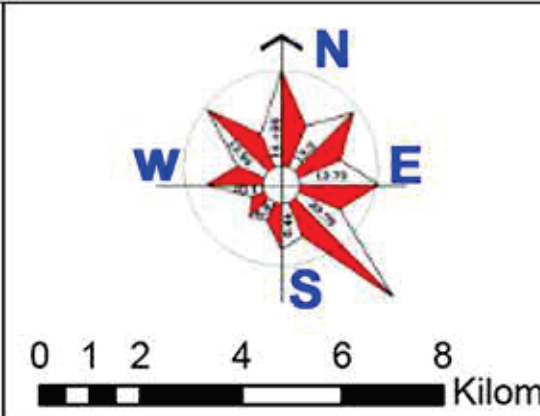


DE LA PLANIFICATION PROVINCIALE DE THANH HOA POUR LA PÉRIODE 2021-2030, AVEC UNE VISION JUSQU'EN 2045  
CARTE ACTUELLE DU DÉVELOPPEMENT SOCIO-ÉCONOMIQUE



AGRICULTURE, FORESTRY, AND FISHING, VALUE ADDED (% OF GDP)						
No.	Sector	2016	2017	2018	2019	2020
1	Agriculture	13.87	11.36	10.19	9.04	8.18
2	Forestry	1.11	1.09	0.98	0.96	0.91
3	Aquaculture production	2.32	2.22	2.07	2.02	1.93
4	Mining	0.64	0.63	0.56	0.45	0.38
5	Manufacturing and processing industry	22.27	23.51	29.3	33.18	36.38
6	Production and distribution of electricity, gas, hot water, steam and air conditioning	1.96	1.95	1.7	1.58	1.48
7	Water supply, management and treatment of waste and wastewater	0.41	0.42	0.37	0.34	0.31
8	Construction	17.08	17.47	16.56	16.07	15.79
9	Activities of the Communist Party, socio-political organizations, state management, national security and defense...	6.01	5.95	5.35	4.98	4.68
10	Administrative activities and support services	0.5	0.53	0.49	0.46	0.43
11	Real estate business	5.64	5.42	4.83	4.45	4.11
12	Financial activities, banking, insurance	3.63	3.64	3.26	3.03	2.84
13	Information and communication	0.9	0.91	0.84	0.81	0.79
14	Catering and accommodation services	2.92	3.06	2.82	2.68	2.55
15	Transportation, warehousing	3.13	3.13	2.88	2.77	2.66
16	Wholesale, retail, repair of cars, motorcycles and other motor vehicles	8.48	8.9	8.43	8.19	7.99
17						

