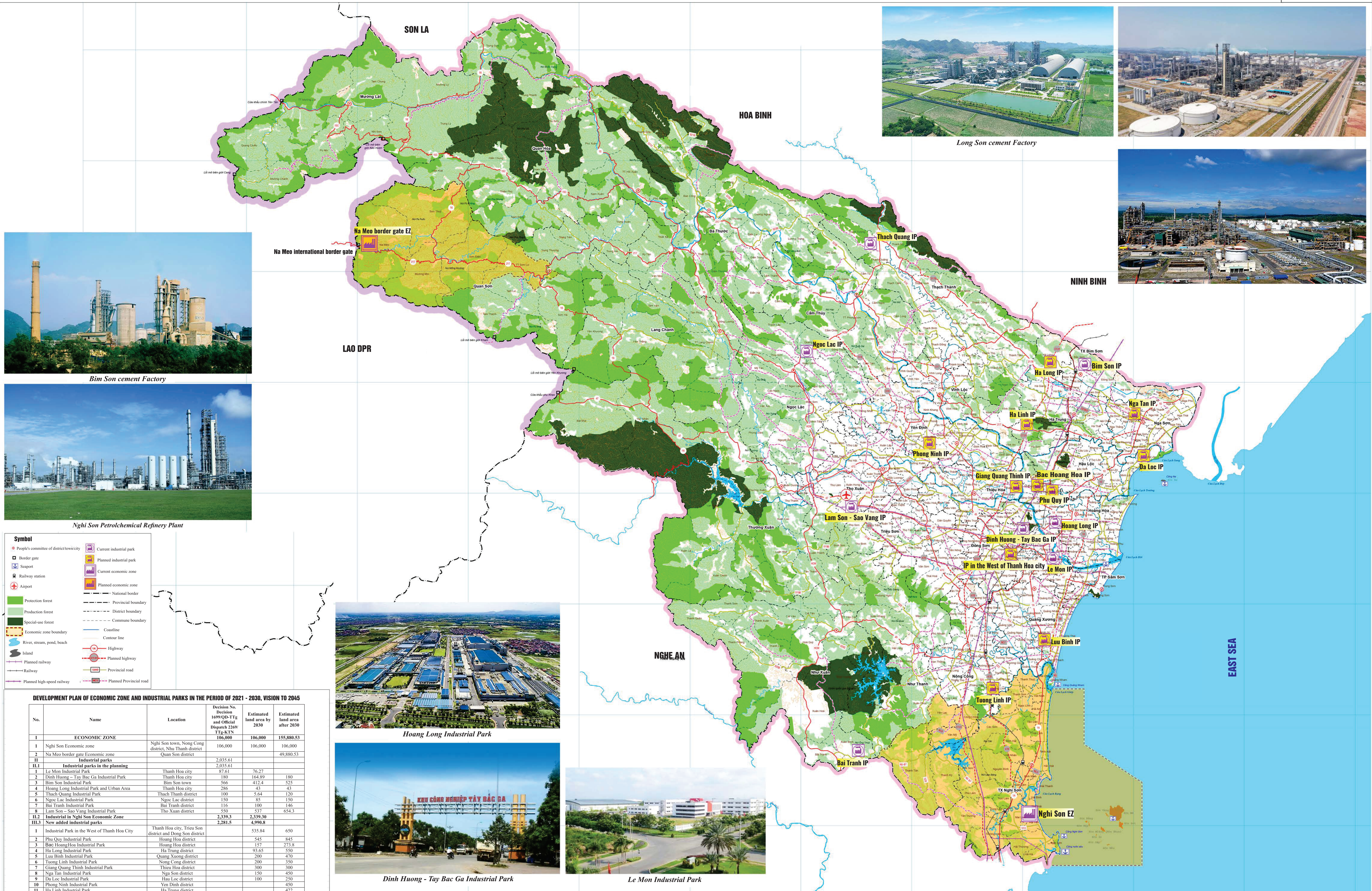
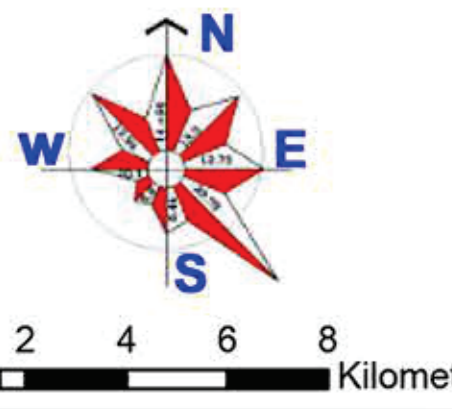


# DE LA PLANIFICATION PROVINCIALE DE THANH HOA POUR LA PÉRIODE 2021-2030, AVEC UNE VISION JUSQU'EN 2045

## CARTE DU PLAN DE DÉVELOPPEMENT DE LA ZONE ÉCONOMIQUE ET DU PARC INDUSTRIEL À L'HORIZON 2030



Long Son cement Factory



Bim Son cement Factory



Nghi Son Petrochemical Refinery Plant

**Symbol**

- People's committee of district/town/city
- Border gate
- Seaport
- Railway station
- Airport
- Protection forest
- Production forest
- Special-use forest
- Economic zone boundary
- River, stream, pond, beach
- Island
- Planned railway
- Railway
- Planned high-speed railway
- Current industrial park
- Planned industrial park
- Current economic zone
- Planned economic zone
- National border
- Provincial boundary
- District boundary
- Commune boundary
- Coastline
- Contour line
- Highway
- Planned highway
- Provincial road
- Planned Provincial road

**DEVELOPMENT PLAN OF ECONOMIC ZONE AND INDUSTRIAL PARKS IN THE PERIOD OF 2021 - 2030, VISION TO 2045**

No.	Name	Location	Decision No. 1699/QĐ-TTg and Official Dispatch 2269/TTg-KTN	Estimated land area by 2030	Estimated land area after 2030
<b>I ECONOMIC ZONE</b>					
1	Nghi Son Economic zone	Nghi Son town, Nong Cong district, Nhu Thanh district	106,000	106,000	106,000
2	Na Meo border gate Economic zone	Quan Son district	2,035.61	2,035.61	49,880.53
<b>II Industrial parks</b>					
<b>II.1 Industrial parks in the planning</b>					
1	Le Mon Industrial Park	Thanh Hoa city	87.61	76.27	
2	Dinh Huong - Tay Bac Ga Industrial Park	Thanh Hoa city	180	164.89	180
3	Bim Son Industrial Park	Bim Son town	566	412.4	525
4	Hoang Long Industrial Park and Urban Area	Thanh Hoa city	286	43	43
5	Thach Quang Industrial Park	Thach Thanh district	100	5.64	120
6	Ngoc Lac Industrial Park	Ngoc Lac district	150	85	150
7	Bai Tranh Industrial Park	Bai Tranh district	116	100	146
8	Lam Son - Sao Vang Industrial Park	Tho Xuan district	550	537	654.3
<b>II.2 Industrial in Nghi Son Economic Zone</b>					
			2,339.3	2,339.30	
<b>III.3 New added industrial parks</b>					
			2,281.5	4,990.8	
1	Industrial Park in the West of Thanh Hoa City	Thanh Hoa city, Trieu Son district and Dong Son district		535.84	650
2	Phu Quy Industrial Park	Hoang Hoa district		545	845
3	Bac Hoang Hoa Industrial Park	Hoang Hoa district		157	273.8
4	Ha Long Industrial Park	Ha Trung district		93.65	550
5	Luu Binh Industrial Park	Quang Xuong district		200	470
6	Tuong Linh Industrial Park	Nong Cong district		200	350
7	Giang Quang Thinh Industrial Park	Thieu Hoa district		300	300
8	Nga Tan Industrial Park	Nga Son district		150	450
9	Da Loc Industrial Park	Hau Loc district		100	250
10	Phong Ninh Industrial Park	Yen Dinh district		100	450
11	Ha Linh Industrial Park	Ha Trung district		100	422



Hoang Long Industrial Park



Dinh Huong - Tay Bac Ga Industrial Park



Le Mon Industrial Park

EAST SEA